

# Ear Training Analysis (Answer Key)

Vidas Pinkevicius  
www.organduo.lt

$\text{♩} = 120$

1 Minor Tetrachord

2 Lydian Tetrachord



3 Double Harmonic Major



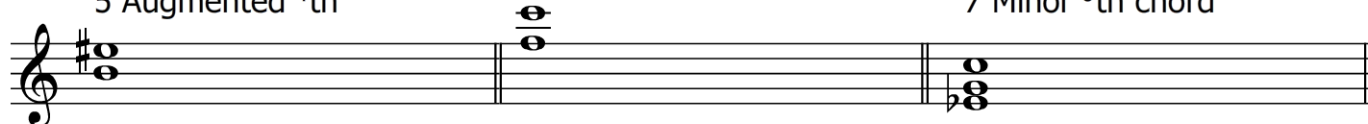
4 Lydian Mode



5 Augmented 4th

6 Perfect 5th

7 Minor 6th chord



8 Major 64 chord

9 Dominant 4 2 chord

10 Dominant 6 5 chord

